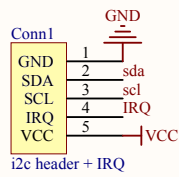
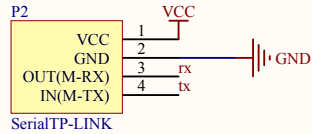


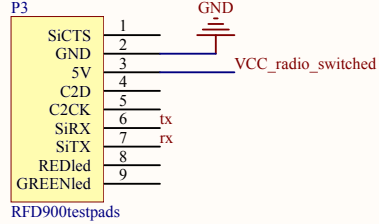
i2c connector for sensors



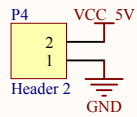
connection to the router



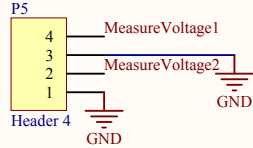
connection to the radio



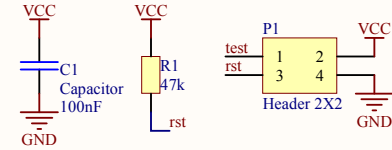
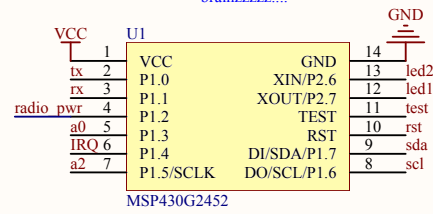
secondary supply option for radio



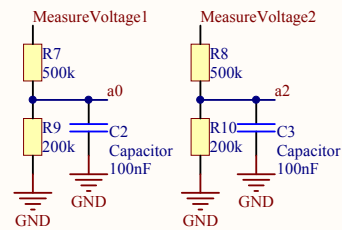
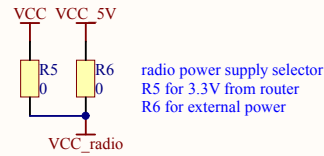
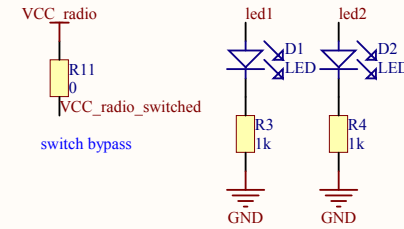
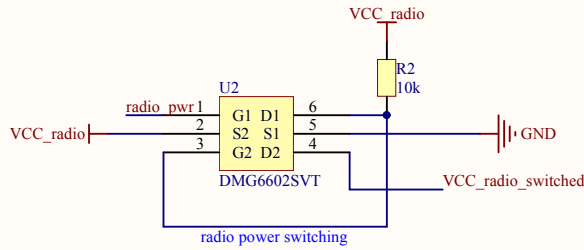
voltage measurement connections



brainzzzzz....

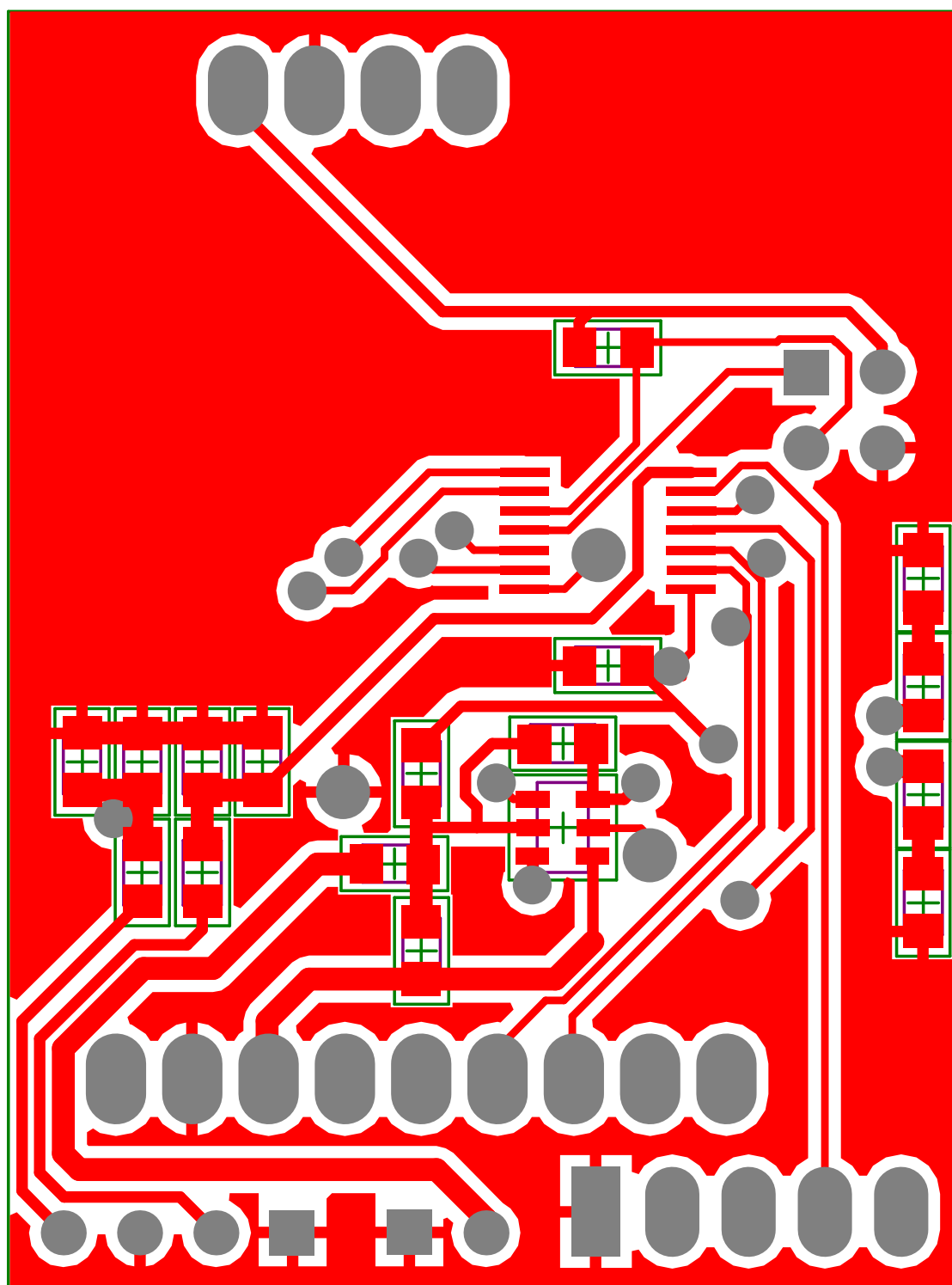


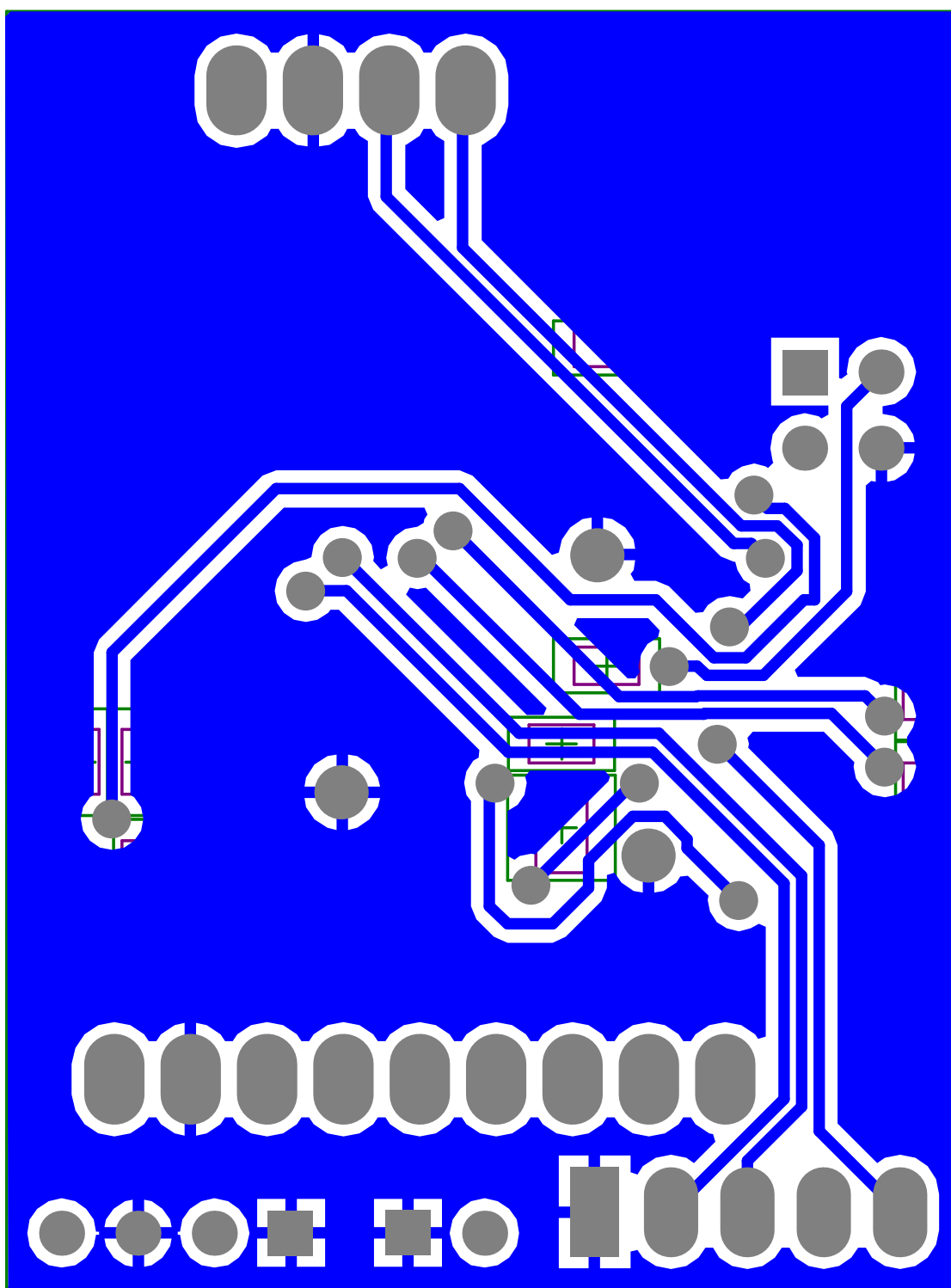
decoupling and programming



potential dividers for measurements

| | | |
|------------|--|-----------|
| Title | | |
| Size A4 | Number | Revision |
| Date: | 22/10/2013 | Sheet of |
| File: | C:\Users\...\ServalMC3020Insert.SchDoc | Drawn By: |





Serval Mesh Extender www.servalproject.org

MC3020 Insert

v0.1

musti@wlan-si.net

